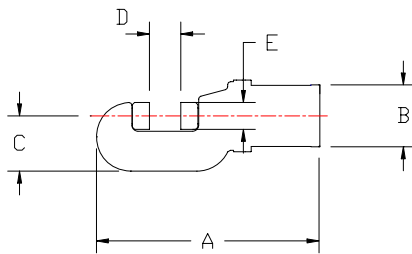




## Hydraulic Rod & Bar Shears (Metric Information)

### Here are the 8 features that make Vale Shears the standard for the industry:

1. Mill-type BOLTED CAP CONSTRUCTION for easy maintenance.
2. SUPER SEALING, with only TEFLON parts touching the cylinder bore.
3. BRONZE-FILLED TEFLON WEAR RING prevents piston from touching cylinder bore.
4. ALL STEEL SUSPENSION RING for maximum safety.
5. AXIAL RAM GUIDE KEY for more accurate blade cuts.
6. SINGLE SPRING CONSTRUCTION for longer life.
7. HIGH STRENGTH BRONZE RAM BUSHING.
8. ALLOY STEEL HEAT-TREATED and HARD PLATED single piece ram and piston for simplicity and accuracy. Requires one less seal.



### Vale gives you even more:

- TWIST LOCK electrical connector with BOOT PROTECTOR.
- HEAVY DUTY trigger type switch, 15 AMP rated.
- HIGH STRENGTH ALUMINUM switch handle with integral trigger guard for greater safety.
- Heavy-walled cylinder, 276 Bar working pressure with 4 to 1 SAFETY FACTOR.
- HIGH STRENGTH ALLOY heat treated "C" frame.

MODEL	CAPACITY DIA.	SHEAR STRENGTH BAR @	BLADE #	WEIGHT Kg.	DIM A mm	DIM B mm	DIM C mm	DIM D mm	DIM E mm
V10-C1539	15.75	4137	A-1502	6.8	253	76	68	19	30
V15-D1507	20.57	4137	A-1502	10.0	267	100	68	22	30
V35-D1508	31.75	3792	A-1502	23.6	320	144	78	34	30
V70-D1509	41.27	4137	A-1503	52.2	417	197	124	46	44
V90-D1570	50.8	4137	A-1501	121.2	610	229	184	57	57
V135-D1708	63.0	4137	A-3716	272.0	787	314	254	70	70
V250-D1510	45.97	1379	A-1731	33.6	476	132	117	67	57
V350-D1511	63.5	1379	A-1505	59.0	610	144	155	89	70
V700-D1512	76.2	1379	A-1506	120.3	781	197	190	114	89
V900-D1600	88.9	1379	A-1920	205.9	952	229	248	140	127

**NOTE:** See Bulletin 170 for cycle times. All information subject to change without notice.

#### Corporate Headquarters

Vale Industries Inc.  
122 Simonds Ave.,  
DeKalb, Illinois 60115-3992  
Phone: (815) 756-2426  
Fax: (815) 756-2735  
E-mail: [info@vale-industries.com](mailto:info@vale-industries.com)  
[www.vale-industries.com](http://www.vale-industries.com)

#### International Division

Vale Industries Inc.  
115 S. 4<sup>th</sup> Avenue.  
St. Charles, Illinois 60174-2145  
Phone: (630) 584-1900  
Fax: (630) 584-2599  
E-mail: [info@bwdarrah.com](mailto:info@bwdarrah.com)